

DEPARTMENT 2 - AGRICULTURAL

PREMIUMS ARE 1ST \$5, 2ND \$3, 3RD \$1

NOTE: Place items in a container on which a label can easily be attached

CLASS SECTION

1. Apples

- a. Crabapples
- b. Dried
- c. Red
- d. Yellow
- e. Yate



2. Beans

- a. Butterbeans – white
- b. Butterbeans – colored
- c. Green beans - half-runners
- d. Green beans – pole
- e. Ornamental beans
- f. Soybeans
- g. Wax beans

3. Cantaloupe

4. Carrots

5. Corn

- a. Indian
- b. Ornamental
- c. Popcorn
- d. White
- e. Yellow



6. Cotton

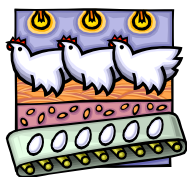
7. Cucumber

8. Cushaws

9. Eggplant

10. Eggs

- a. White
- b. Brown
- c. Blue



11. Figs

- a. Fresh
- b. Dried

12. Garlic

13. Gourds

- a. Martin
- b. Dipper
- c. Gourd Display (3 different varieties)

14. Grain

- a. Sorghum
- b. Display (limit to 6 heads)

15. Grapes

- a. Red
- b. White
- c. Black



16. Honey

- a. Extracted
- b. With comb
- c. Bees wax

17. Muscadines

18. Nuts

- a. Chestnuts
- b. Hickory
- c. Pecans
- d. Walnuts

19. Okra

- a. Green
- b. Red
- c. White



CLASS SECTION

20. Onions

- a. Multiplying
- b. Red
- c. White
- d. Yellow

21. Peaches

- a. White
- b. Yellow
- c. Dried



22. Peanuts

23. Pears

24. Peas

- a. Crowder
- b. Purple Hull
- c. Dried

25. Pepper

- a. Banana
- b. Bell
- c. Cayenne
- d. Habenera
- e. Jalapeno
- f. Pepper Plant



26. Persimmons

27. Pomegranate

28. Potatoes

- a. German
- b. Irish
- c. Sweet Red
- d. Sweet White

29. Pumpkin

- a. Best Over All
- b. Largest
- c. Mini
- d. Other



30. Scuppernongs

31. Seeds

- a. Grain (1/2 pint)
- b. Vegetable (1/2 pint)

32. Squash

- a. Acorn
- b. Banana
- c. Butternut
- d. Summer Yellow
- e. Summer White
- f. Turban
- g. Zucchini

33. Sunflower

34. Syrup

- a. Sorghum

35. Tomatoes

- a. Cherry
- b. Grape
- c. Red
- d. Roma
- e. Yellow



36. Vegetable Display (6 varieties)

(1st - \$5, 2nd - \$4, and 3rd - \$3)

37. Watermelon

